

WICONA®
TECHNIK FÜR IDEEN



For buildings with character

» WICLINE

ALUMINIUM WINDOW

» Applications

The decisive criteria

more flexible

- All system variants have many special options and opening variants based on a series technology
- Two fitting variants (surface-mounted and concealed hinges) with the same processing steps
- Large sash formats and sash weights

more visually attractive

- Anodisable band pages and handles offer extended design flexibility
- Design variants such as classic design, concealed sash, large sash formats and special profiles can be easily implemented
- Thin, delicate constructions

more production-friendly

- Consistent concept for punching with WICPRO multi punches or hand punches.
- WICONA Unisys: The same components for all ranges of both windows and doors
- Components developed with installers for optimised production processes

faster

- Patented corner connection technology with single-side adhesive injection
- Unique fittings installation with DPS (Direct Positioning System)
- All profiles can be punched

more variable

- A central seal with three installation types: "Frame before roller", with shaped corners or as a frame
- Large selection of profiles for all applications
- Easy subsequent retrofitting (e.g. glazing, opening function, burglar resistance)

more process reliability

- Fewer components and processing steps resulting in greater certainty in processing
- Reliable and certain calculation, U value calculation, construction and work preparation with the WICTOP software
- Higher pre-fabrication level for fittings

more environmentally responsible

- Aluminium is almost entirely recyclable
- WICONA has obtained Bronze Cradle to Cradle (C2C) certification. This applies to the WICLINE 75 / 65 window ranges, the WICSTYLE 75 / 65 and WICSTYLE 77FP door ranges and the WICTEC 50 façade
- Up to 68% of the energy used for producing the aluminium for WICONA profiles comes from water power
- Development with Eco design: e.g. higher insulation and static values for a lower proportion of material

WICLINE – at a glance



All elements have been tested and approved for their application by our development team. So you can rely on the guaranteed performance of WICLINE windows.



Burglar resistance and bullet resistance



Optimised manufacturing process



Availability of all configurations



Top performance



» WICLINE 75 evo / 65 evo

For individual requirements

The reference technology for aluminium windows

Increasing the energy efficiency of buildings is one of the core technical demands across the world. Nowadays, buildings can be built which produce more energy than they use: buildings with a positive energy balance!

The shell of the building plays a key role in this performance, and very early co-operation between the groups involved in the energy efficiency (architects, planning offices, manufacturers, processors) is crucial for achieving a result which meets the demands.

The aluminium windows and French windows from the WICLINE evo range with a system depth of 65 and 75 mm were developed to meet this challenge thanks to their exceptional heat insulation and the numerous possibilities for use.

With the highest performance characteristics, this window system is ideally suited to all future architectural demands. In Switzerland, WICLINE 75 evo was the first metal window to be certified as a Minergie-P module.

When developing this range, WICONA consciously decided on an evolution rather than a revolution. This means every component is analysed in co-operation with customers and partners and optimised for use in practice.

The result:

- Higher financial returns
- Reliable manufacturing process for a guaranteed performance
- Simpler and faster manufacture

WICONA partners and their customers benefit from this.



Environmental responsibility

As one of the first system housings, WICONA was already equipping window, door and façade profiles with heat insulation composed of recycled polyamide in 2015. The heat insulation serves to thermally separate the profile constructions and consist of up to 100 % recycled material. This significantly improves the ecological balance of the system – without reducing the quality and without increasing the price for WICONA customers.

The variety of polyamide recycled materials are evaluated in an upcycling process so that the material characteristics are directly comparable to new material. Polymer blends or mixed recycled materials are not used. With this product, the use of fossil fuels is reduced by 89 %, the CO₂ output is reduced by 84 % and water consumption is reduced by 32 %.

This decision has a direct impact on the environmental footprint of WICONA windows, since this offers a crucial advantage if conformity certification is required for compliance with standards for ecological building such as with the LEED or DGNB labels, Minergie-P, BBC and HQE.

In comparison to a window in which no recycled polyamide is used, the environmental balance of a WICLINE 75 evo window is improved by 10 %: This result is certified by the Environmental Product Declaration (EPD). The WICTOP Genius software package for thermal calculations and simulations lets you generate environmental product declarations.

WICONA has obtained the Bronze Cradle to Cradle (C2C) certificate for the window ranges WICLINE 75 / 65, awarded by Cradle to Cradle (C2C) Products Innovation Institute, a non-profit organisation based in San Francisco (USA).



Solutions for all situations

- All designs, whether with concealed or visible sashes, are based on the WICONA Unisys principle and can be integrated perfectly into the WICTEC 50 façades.
- 2 fittings options (concealed and visible), which use the same manufacturing planning

Innovation for more process profitability

- Patented corner angle system which enables adhesive to be injected in a single operation
- Fast fittings installation using the unique DPS system (Direct Positioning System)



An offering which covers all possible implementations and is available with a system depth of 65 and 75 mm; with numerous options which allow a true customisation to the specific requirements of any site.



Appealing appearance



Optimised production process



Offering coordinated to eco-labelling.



Environmental product declaration available via WICTOP

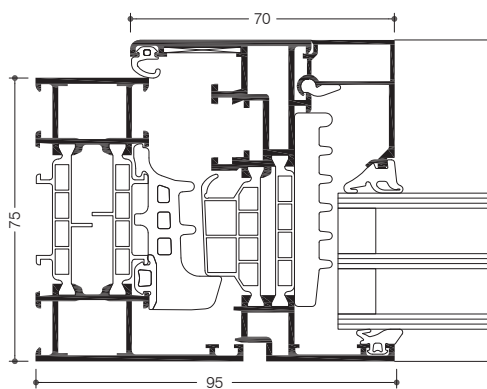
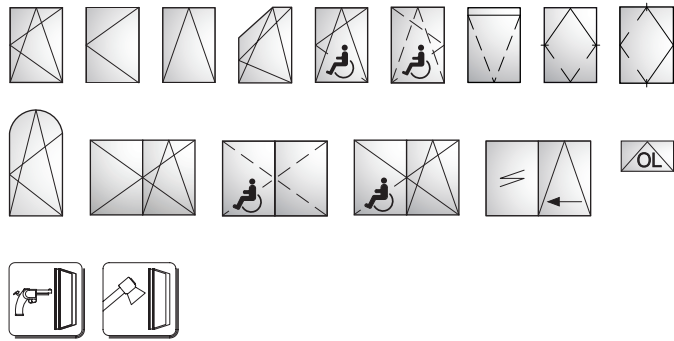


» WICLINE 75 evo / 65 evo Visible sash

With a 75 mm system depth, WICLINE 75 evo integrates excellent heat insulation characteristics and building features. With the highest performance characteristics, this aluminium window is ideally suited to all future architectural demands. In Switzerland, WICLINE 75 evo was the first metal window to be certified as a Minergie-P module.

With a 65 mm system depth, the system already meets the high requirements for heat and sound insulation. So WICLINE 65 evo offers a particularly favourable price to performance ratio. The highly developed technology and the comprehensive profile programme make WICLINE 65 evo windows the perfect all-rounder with a versatile spectrum of uses.





System test results / CE product pass in accordance with DIN EN 14351-1:2006+A1:2010

Air permeability:	Class 4
Watertightness:	E900
Resistance to wind load:	Class C5 / B5
Acoustic performance:	$R_w (C; C_{tr}) = 47 (-1; -4) \text{ dB}$
Operating forces:	Class 1
Load bearing capacity of safety devices:	Fulfilled
Mechanical strength:	Class 4
Repeated opening / closing:	Class 3 (20 000 cycles)
Corrosion resistance of the fittings:	Class 5
Burglar resistance:	RC1N, RC2N, RC2, RC3
Bullet resistance:	FB4 S, FB4 NS (depending on the profile combination)
Quality assurance:	Certified according to ISO 9001:2008
Environmental management:	Certified according to ISO 14001

Technical performance:

Profile technology:

- High insulation multi-chamber system in symmetric design, quality assured thermal insulator connection
- Patented corner and butt joint connection technology for high rigidity of frames and sashes
- Infill thickness up to 69 mm (up to 59 mm for WICLINE 65 evo)

Thermal insulation:

- U_f values WICLINE 75 evo: until $1.2 \text{ W}/(\text{m}^2\text{K})$
- U_f values WICLINE 65 evo: until $1.4 \text{ W}/(\text{m}^2\text{K})$
- U_w values WICLINE 75 evo: until $0.87 \text{ W}/(\text{m}^2\text{K})$ for sashes, until $0.72 \text{ W}/(\text{m}^2\text{K})$ for fixed glazing, with triple glazing
- U_w values WICLINE 65 evo: until $0.93 \text{ W}/(\text{m}^2\text{K})$ with triple glazing
- Certified as Minergie-P module $U_w 0.8 \text{ W}/(\text{m}^2\text{K})$

Sealing concept:

- Voluminous centre gasket with three installation methods:
 - Circumferential centre gasket, no joints in the corner areas
 - Formed corners, avoiding adhesive in the joints
 - Corner vulcanised frames

Hardware:

- Heavy duty system fittings with:
 - Visible hinges, powder coating or anodisation in all colours
 - Concealed hinges with integrated end position damping, opening angle max. 105°
- Sash weight:
 - Concealed hinges: up to 160 kg
 - Visible hinges: up to 200 kg
 - On demand: up to 300 kg
- Sash sizes (w x h): 1700 mm x 2500 mm, fanlight 2500 mm x 1700 mm
- Optionally with opening limiter

Additional designs:

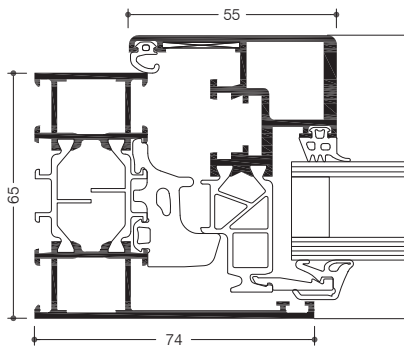
- Concealed sash
- Classic design
- Integration frame for stick façades
- Fanlight with hand lever, cranked rod or motor
- Pivot window, horizontal or vertical
- Parallel sliding window, with or without force operation
- Italian style window
- Top-hung window
- Window doors with barrier free threshold, single or double casement door, inward and outward opening

Compatible with the door series WICSTYLE 65 evo and WICSTYLE 75 evo

» WICLINE 75 evo / 65 evo Concealed sash

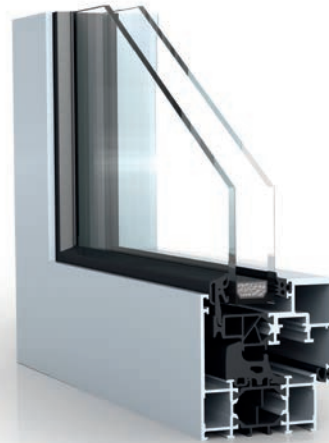


The option "Concealed Sash" in the aluminium window system WICLINE evo features a special glazing bead fixed directly in the thermal break zone. As a result the system achieves an extremely slim frame elevation, superior thermal insulation values and a groove-free profile design from outside. The improved ratio between frame and glazing surfaces leads to very good U_w values, increased light transmissions and panoramic views.



System test results / CE product pass in accordance with DIN EN 14351-1:2006+A1:2010

Air permeability:	Class 4
Watertightness:	E1200
Resistance to wind load:	Class C5 / B5
Operating forces:	Class 1
Load bearing capacity of safety devices:	Fulfilled
Mechanical strength:	Class 4
Repeated opening / closing:	Class 2 (10 000 cycles)
Impact resistance:	Class 3
Corrosion resistance of the fittings:	Class 5
Burglar resistance:	RC1N, RC2N, RC2, RC3
Quality assurance:	Certified according to ISO 9001:2008
Environmental management:	Certified according to ISO 14001



Technical performance:

Profile technology:

- High insulation multi-chamber system in symmetric design, quality assured thermal insulator connection
- Patented corner and butt joint connection technology for high rigidity of frames and sashes
- Infill thickness up to 42 mm
- Optionally with integration frame for stick curtain walls

Thermal insulation:

- U_f values: until 1,5 W/(m²K)
- U_w values: until 0.94 W/(m²K) with triple glazing

Sealing concept:

- Voluminous centre gasket with three installation methods:
 - Circumferential centre gasket, no joints in the corner areas
 - Formed corners, avoiding adhesive in the joints
 - Corner vulcanised frames

Hardware:

- Heavy duty system fittings with:
 - Visible hinges, powder coating or anodisation in all colours
 - Concealed hinges with integrated end position damping, opening angle max. 105°
- Sash weight:
 - up to 130 kg
- Sash sizes (w x h): 1400 mm x 2250 mm
- Optionally with opening limiter in various executions

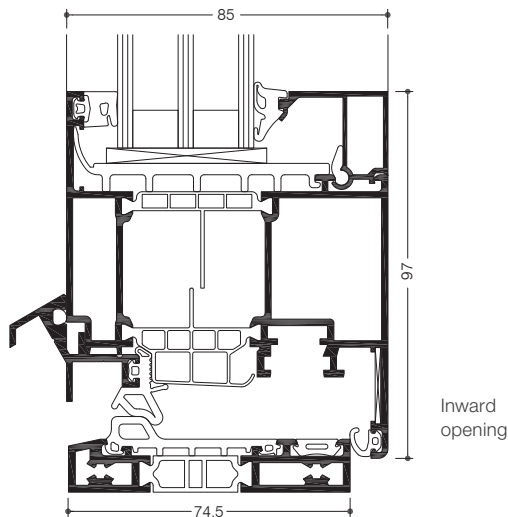
Additional designs in concealed sash design:

- Integration frame for stick façades
- Fanlight
- Burglar resistance (see system tests)

» WICLINE 75 evo / 65 evo French door, barrier free



With extended sash formats, single or double casement option and barrier free threshold this aluminium window door with inward or outward opening offers new freedom in architectural design. Superior technical performance and exemplary thermal insulation set new standards.



System test results / CE product pass in accordance with DIN EN 14351-1:2006+A1:2010

	Inward opening	Outward opening
Air permeability:	Class 4	Class 4
Watertightness:	Single sash: 9A Double sash: 7A	7A
Resistance to wind load:	Until Class C5/B5	Class C3 / B3
Operating forces:	Class 1	Class 1
Mechanical strength:	Class 4	Class 4
Corrosion resistance of the fittings:	Class 5	
Repeated opening / closing:	Class 2 (10 000 cycles)	Class 2 (10 000 cycles)
Quality assurance:	Certified according to ISO 9001:2008	
Environmental management:	Certified according to ISO 14001	



Technical performance:

Profile technology:

- High insulation multi-chamber system in symmetric design, quality assured thermal insulator connection
- Patented corner and butt joint connection technology for high rigidity of frames and sashes
- Infill thickness up to 69 mm
- Barrier free threshold, thermally insulated

Thermal insulation:

- U_f values: until 1,3 W/(m²K)

Sealing concept:

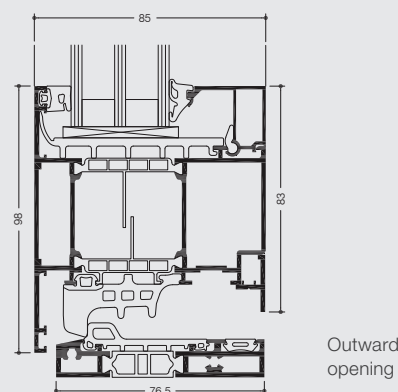
- Voluminous centre gasket with three installation methods:
 - Circumferential centre gasket, avoiding joints in the corner areas
 - Formed corners, avoiding adhesive in the joints
 - Corner vulcanised frames on 3 sides

Hardware:

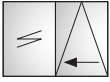
- Alternatively inward or outward opening
- Single or double sash option
- Inward opening option with heavy duty system fittings, with visible hinges, powder coating or anodisation in various colours.
- Sash weight:
 - Up to 130 kg
- Sash sizes (w x h):
 - Inward opening: up to 1400 mm x 2500 mm
 - Outward opening: up to 1300 mm x 2250 mm
- Optionally with opening limiter in various executions

Compatible with the door series

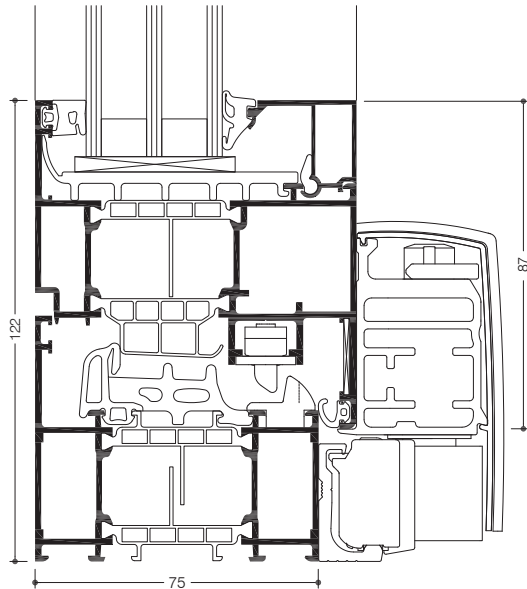
WICSTYLE 65 evo and WICSTYLE 75 evo



» WICLINE 75 evo / 65 evo Tilt slide window



In this space saving opening version the sash can be tilted or slid away to the side with ease. High operation comfort, versatile ventilation positioning without disturbing the sash and the elevated technical performance values are characteristic for this opening type of the WICLINE evo aluminium window system.



Technical performance:

Profile technology:

- High insulation multi-chamber system in symmetric design, quality assured thermal insulator connection
- Patented corner and butt joint connection technology for high rigidity of frames and sashes
- Infill thickness up to 69 mm

Thermal insulation:

- U_f values: until 1.2 W/(m²K)

Sealing concept:

- Voluminous centre gasket in corner vulcanised frames

Hardware:

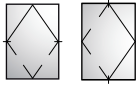
- Tilt slide fittings, optionally
 - without force operation
 - with force operation (wfo)
- Sash weight:
 - Up to 160 kg
 - Up to 200 kg (wfo)
- Sash sizes (w x h):
 - Up to 1685 mm x 2500 mm
 - Up to 2000 mm x 2700 mm (wfo)

Compatible with the door series
WICSTYLE 65 evo and WICSTYLE 75 evo

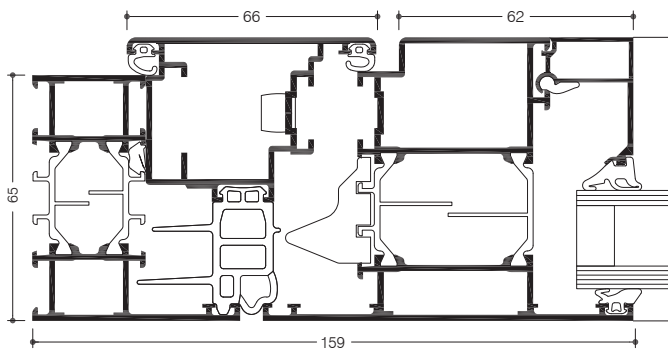
System test results / CE product pass in accordance with DIN EN 14351-1:2006+A1:2010

Air permeability:	Class 4
Watertightness:	E750
Resistance to wind load:	Class C5 / B5
Operating forces:	Class 1
Mechanical strength:	Class 4
Repeated opening / closing:	Class 2 (10000 cycles)
Quality assurance:	Certified according to ISO 9001:2008
Environmental management:	Certified according to ISO 14001

» WICLINE 75 evo / 65 evo
Integration pivot sash,
horizontal or vertical



A classic opening type becomes again a state-of-the-art product with WICONA technology: The horizontal and the vertical pivot windows based on the aluminium window system WICLINE evo offer improved thermal insulation, have achieved high classifications in CE-testing each, and with their option of visible or concealed fittings they are a real visual highlight for any façade integration.



System test results / CE product pass in accordance with DIN EN 14351-1:2006+A1:2010

	Horizontal	Vertical
Air permeability:	Class 4	Class 4
Watertightness:	E750	4A
Resistance to wind load:	Class C5 / B5	Class C5 / B5
Operating forces:	Class 1	Class 1
Mechanical strength:	Class 4	Class 4
Repeated opening / closing:	Class 2 (10 000 cycles)	Class 2 (10 000 cycles)
Quality assurance:	Certified according to ISO 9001:2008	
Environmental management:	Certified according to ISO 14001	



Technical performance:

Profile technology:

- High insulation multi-chamber system in symmetric design, quality assured thermal insulator connection
- Patented corner and butt joint connection technology for high rigidity of frames and sashes
- Infill thickness up to 69 mm
- Optionally with frame for punched hole application

Thermal insulation:

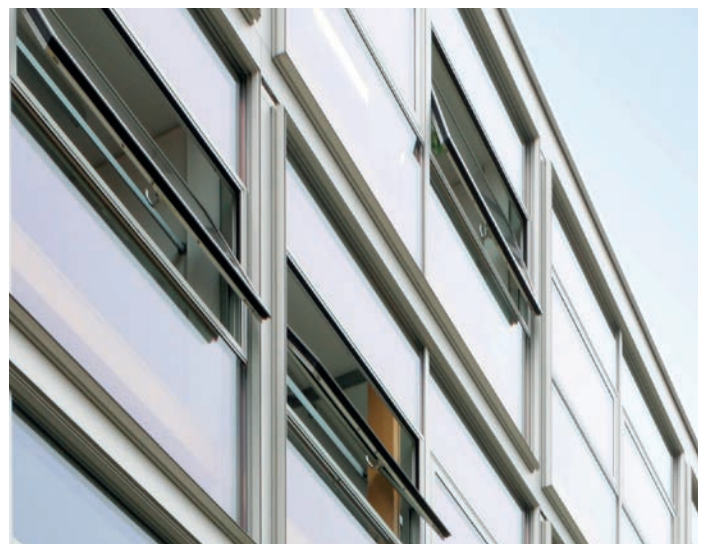
- U_f values: until 1.5 W/(m²K)
- U_w values: until 1.0 W/(m²K) with triple glazing

Sealing concept:

- Special multi-chamber centre gasket with fins for superior tightness and improved thermal insulation

Hardware:

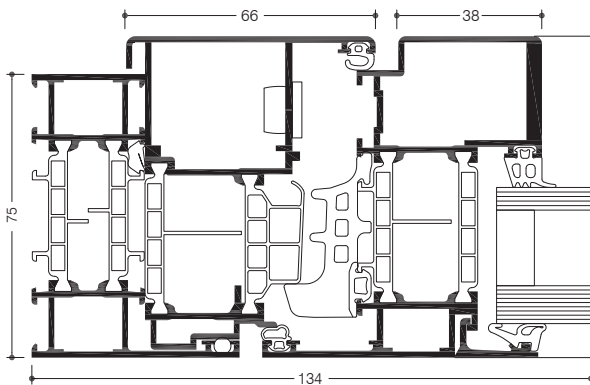
- Horizontal or vertical pivot fittings, optionally with
 - visible bearings or
 - concealed bearings
- Sash weight:
 - Horizontal: up to 150 kg
 - Vertical: up to 120 kg
- Sash sizes (w x h):
 - Horizontal: up to 2400 mm x 1400 mm
 - Vertical: up to 2000 mm x 2000 mm



» WICLINE 75 evo / 65 evo Integration sash, outward opening, Italian sash



An elegant appearance combined with efficient ventilation are the characteristics of the aluminium system WICLINE evo in its Italian opening version. Concealed friction stays ensure an outward opening also for large size sashes, with a secure opening fixation in any position. Special frame profiles for curtain wall integration as well as a large selection of friction stay sizes guarantee maximum versatility of the system.



Technical performance:

Profile technology:

- High insulation multi-chamber system in symmetric design, quality assured thermal insulator connection
- Patented corner and butt joint connection technology for high rigidity of frames and sashes
- Infill thickness up to 69 mm
- Optionally with frame for punched hole application

Thermal insulation:

- U_f values: until 1.5 W/(m²K)
- U_w values: until 1.0 W/(m²K) with triple glazing

Sealing concept:

- Voluminous centre gasket with formed corners

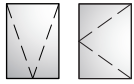
Hardware:

- Concealed integrated friction stay fittings, with vertical adjustment
- Operation either manual or motorised
- Sash weight: until 150 kg
- Sash sizes (w x h): until 2000 mm x 2200 mm

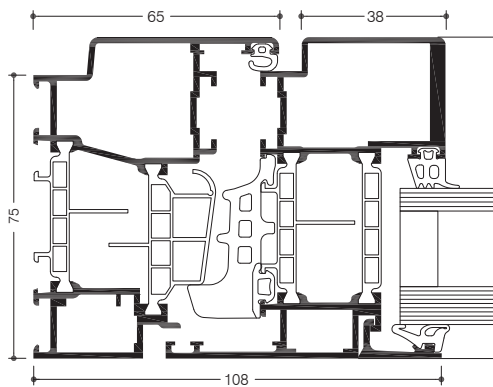
System test results / CE product pass in accordance with DIN EN 14351-1:2006+A1:2010

Air permeability:	Class 4
Watertightness:	E1200
Resistance to wind load:	Class C5 / B5
Operating forces:	Class 1
Mechanical strength:	Class 4
Repeated opening / closing:	Class 2 (10 000 cycles)
Impact resistance:	Class 3
Quality assurance:	Certified according to ISO 9001:2008
Environmental management:	Certified according to ISO 14001

» WICLINE 75 evo / 65 evo Top hung / Turn window, outward opening



A sash opening towards the outside offers many substantial advantages like effective ventilation, the choice between manual and motorised operation, and avoids a disturbing sash towards the inside. With very big possible sash dimensions and optimised functionality WICLINE evo offers an interesting alternative opening type for architecture.



Technical performance:

Profile technology:

- High insulation multi-chamber system in symmetric design, quality assured thermal insulator connection
- Patented corner and butt joint connection technology for high rigidity of frames and sashes
- Infill thickness up to 69 mm
- Optionally with frame for punched hole application

Thermal insulation:

- U_f values until 1.5 W/(m²K)
- U_w values until 0.94 W/(m²K)

Sealing concept:

- Special multi-chamber centre gasket with fins for superior tightness and improved thermal insulation

Hardware:

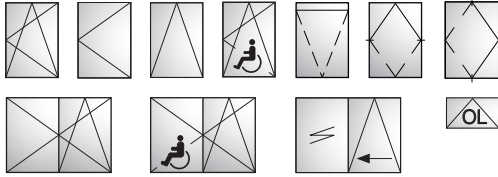
- Externally applied turn hinges, optionally with
 - top fixation for top-hung opening
 - lateral fixation for side-hung opening
- Operation either manual or motorised
- Sash weight until 150 kg
- Sash sizes (w x h): until 2000 mm x 2000 mm

System test results / CE product pass in accordance with DIN EN 14351-1:2006+A1:2010

Air permeability:	Class 4
Watertightness:	E1200
Resistance to wind load:	Class C5 / B5
Operating forces:	Class 1
Load bearing capacity of safety devices:	Fulfilled
Mechanical strength:	Class 4
Repeated opening / closing:	Class 2 (10 000 cycles)
Impact resistance:	Class 3
Quality assurance:	Certified according to ISO 9001:2008
Environmental management:	Certified according to ISO 14001



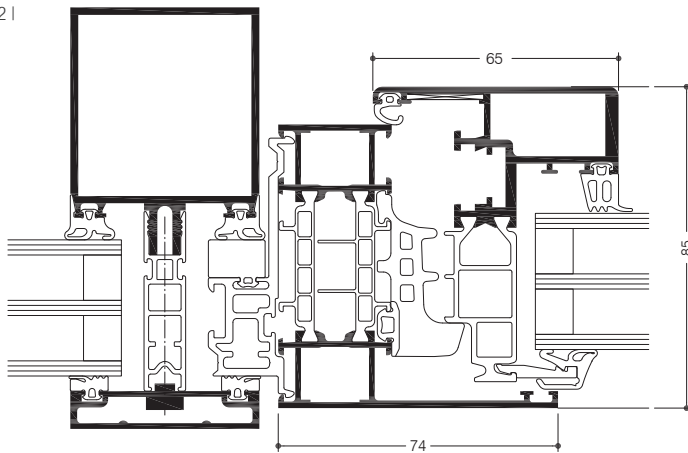
» WICLINE 75 evo / 65 evo Integration sash



The ideal combination: WICTEC stick system curtain walls with integrated opening sashes from the WICLINE window series.

The versatile systems with extended performances offer individual solutions on the highest technical and design level, adaptable with a large selection of additional functions.

21



- 1 | Example standard sash
2 | Example concealed sash

System test results / CE product pass in accordance with DIN EN 14351-1:2006+A1:2010 and DIN EN 13830

See classification of the WICLINE window series and the WICTEC curtain wall series.



Technical performance:

Profile technology:

- High insulation multi-chamber system in symmetric design, quality assured thermal insulator connection
- Patented corner and butt joint connection technology for high rigidity of frames and sashes
- Infill thickness up to 69 mm

Thermal insulation:

- See values of the respective window and door series

Inward opening options:

- Turn / turn-tilt / tilt window
- Concealed sash
- Horizontal pivot window
- Vertical pivot window
- Burglar resistance

Hardware:

- Heavy duty system fittings with:
 - visible hinges, powder coating or anodisation in all colours
 - concealed hinges with integrated end position damping, opening angle max. 105°
- Sash weight:
 - Concealed turn-tilt hinges: up to 160 kg
 - Visible turn-tilt hinges: up to 200 kg
 - Turn hinges (on demand): up to 300 kg
- Sash sizes (w x h): 1700 mm x 2500 mm
- Optionally with opening limiter in various executions

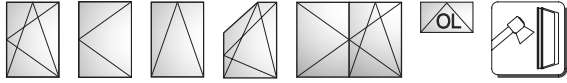
Outward opening options:

- Top-hung window
- Side-hung window
- Italian window

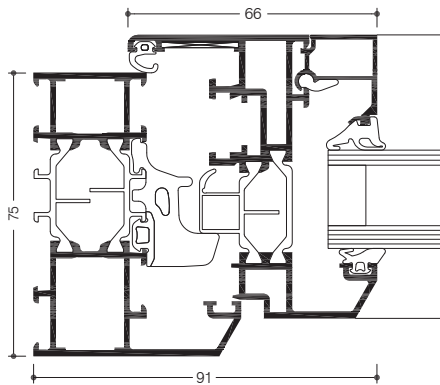
Hardware:

- Visible hinges top-hung or side-hung
- Concealed hinges Italian style window
- Sash weight: up to 150 kg
- Sash sizes (w x h): up to 2000 mm x 2000 mm

» WICLINE 75 evo / 65 evo Classic Design



Bevelled profile contours and overlapping sashes are characteristic for the aluminium door series WICSTYLE evo in classic design. This design underlines a style which is often requested for residential architecture. Ideal for new build and energetic renovations alike.



System test results / CE product pass in accordance with DIN EN 14351-1:2006+A1:2010

Air permeability:	Class 4
Watertightness:	E900
Resistance to wind load:	Class C5/B5
Acoustic performance:	$R_w(C; C_{tr}) = 47 (-1; -4)$ dB
Operating forces:	Class 1
Load bearing capacity of safety devices:	Fulfilled
Mechanical strength:	Class 4
Repeated opening / closing:	Class 3 (20 000 cycles)
Corrosion resistance of the fittings:	Class 5
Burglar resistance:	RC1N, RC2N, RC2, RC3
Quality assurance:	Certified according to ISO 9001:2008
Environmental management:	Certified according to ISO 14001



Technical performance:

Profile technology:

- High insulation multi-chamber system in symmetric design, quality assured thermal insulator connection, with 30° bevelled glazing rebates
- Patented corner and butt joint connection technology for high rigidity of frames and sashes
- Infill thickness up to 59 mm

Thermal insulation:

- U_f values: until 1.5 W/(m²K)
- U_w values: until 0.84 W/(m²K) with triple glazing

Sealing concept:

- Voluminous centre gasket with three installation methods:
 - Circumferential centre gasket, avoiding joints in the corner areas
 - Formed corners, avoiding adhesive in the joints
 - Corner vulcanised frames

Hardware:

- Heavy duty system fittings with:
 - visible hinges, powder coating or anodisation in all colours
 - concealed hinges with integrated end position damping, opening angle max. 105°
- Sash weight:
 - Visible hinges: up to 100 kg
 - Concealed hinges: up to 100 kg
- Sash sizes (w x h): 1300 mm x 1700 mm
- Optionally with opening limiter in various executions

Additional options in classic design:

- Flush sash in classic design
- Overlapping sash and frame in classic design
- Fixed glazing
- Double casement window
- Crossbar profiles and glazing bars
- Integration frame for stick façades
- Fanlight
- Burglar resistance (see system tests)

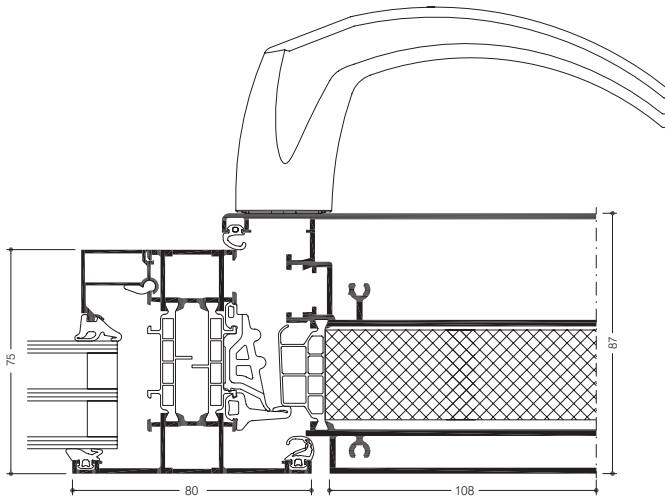
**Compatible with the door series
WICSTYLE 65 evo and WICSTYLE 75 evo
in Classic Design**

» WICLINE 75 evo Ventilation flap

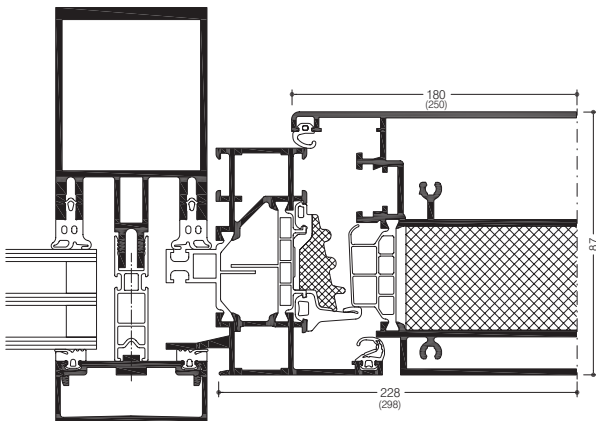
With a one-piece highly insulated aluminium sash, WICONA enables a current façade design with narrow and high ventilation elements alongside generous fixed glazing.

WICLINE thereby unites current design with natural ventilation – flexible, user-friendly and economical.





WICLINE 75 evo Ventilation flap 180
with window frame



WICLINE 75 evo Ventilation flap 250
with tensioning frame for facades

**System test results / CE product pass
in accordance with DIN EN 14351-1:2006+A1:2010**

Air permeability:	Class 4
Watertightness:	Class 9A
Resistance to wind load:	Class C5 / B5
Sound insulation:	Until 42 dB
Burglar resistance:	RC1N, RC2N, RC2



Technical performance:

Highlights:

- Sash widths from 170 to 330 mm, Standard dimensions 180 and 250 mm
- Max. sash sizes (w x h): 180 mm x 3000 mm or 250 mm x 3000 mm
- Fast and economical adjustment of the sash width in the object
- Narrowest possible shadow gap between sash and frame - only 6 mm as in standard WICONA windows
- 3 m sash height including burglar resistance up to RC2
- Simple and efficient processing exclusively with 90° cutting saw or notch cuts
- Comprehensive system testing according to DIN 14351-1 verifies the high quality of the system technology

Thermal insulation:

- U_i value up to 1.2 W/(m²K)

Hardware:

- High quality system fittings with Direct Positioning System (DPS). Components can be assembled in any order, optionally:
 - Surface-mounted hinges, colour coated or anodised
 - Concealed hinges with integrated end-position stops
- Sash weights: 80 kg
- Optionally with opening limiter
- Burglar resistance RC1N, RC2N and RC2

Concealed motor integration:

- 90° opening allowing for maximum ventilation
- Low-maintenance and tamper-proof
- Adjustable opening angle
- Control via ventilation switches, remote control or building management system
- Concealed emergency release
- No motor chains protruding into the opening area

Compatible with the window series WICLINE 75 and façade series WICTEC

Austria

5201 Seekirchen
☎ +43 6212 2000
✉ info@wicona.at

Benelux

3400 Landen
☎ +32 11 690316
✉ info@wicona.be
✉ info@wicona.nl

Croatia

43000 Bjelovar
☎ +385 43 22 25 46
✉ info@wicona.de

Czech Republic

619 00 Brno
☎ +420 602 745 407
✉ wicona@wicona.cz

Denmark

8240 Risskov
☎ +45 7020 2048
✉ wicona@wicona.dk

España

08195 Sant Cugat del Vallès
Barcelona
☎ +34 93 573 77 76
✉ wicona.es@wicona.com

Estonia / Latvia

75312 Rae vald Harjumaa
☎ +372 657 66 35
✉ info@wicona.ee

France

02200 Courmelles
☎ +33 3 23598200
✉ info@wicona.fr

Germany

89077 Ulm
☎ +49 731 3984-0
✉ info@wicona.de

Hungary

1031 Budapest
☎ +36 (1) 4533457
✉ info@wicona.hu

Ireland

Dublin 22
☎ +353 1 4105766
✉ info@wicona.ie

Italia

20063 Cernusco sul Naviglio MI
☎ +39 02 924291
✉ info@wicona.it

Lithuania / Latvia

02244 Vilnius
☎ +370 5 2102587
✉ info@wicona.lt

Norway

2007 Kjeller
☎ +47 22 42 22 00
✉ wicona@wicona.no

Poland

93-428 Łódź
☎ +48 42 683 63 73
✉ info@wicona.pl

Romania

031041 Bucharest
☎ +40 21 3260045
✉ info@wicona.de

Serbia

11070 Beograd
☎ +381 11 312 18 35
✉ info@wicona.de

Slovakia

82105 Bratislava
☎ +421 918 725 098
✉ info@wicona.sk

Slovenia

2201 Zg. Kungota
☎ +386 26 20 99 70
✉ info@wicona.de

Sweden

574 81 Vetlanda
☎ +46 470 78 74 00
✉ wicona@wicona.se

Switzerland

5506 Mägenwil
☎ +41 62 88741-41
✉ info@wicona.ch

United Kingdom

Wakefield WF5 9TG
☎ +44 1924 232323
✉ info.wiconauk@wicona.com

China

Beijing 100005, P.R.C
☎ +86 10 6059 5686 ext. 805
✉ contact.wicona.international@wicona.com

Singapore

608831 Singapore
☎ +65 6513 2126
✉ contact.wicona.international@wicona.com

United Arab Emirates

Dubai
☎ +971 4 887 00 96
✉ contact.wicona.international@wicona.com

Other countries

31037 Toulouse
☎ +33 5 61312626
✉ contact.wicona.international@wicona.com